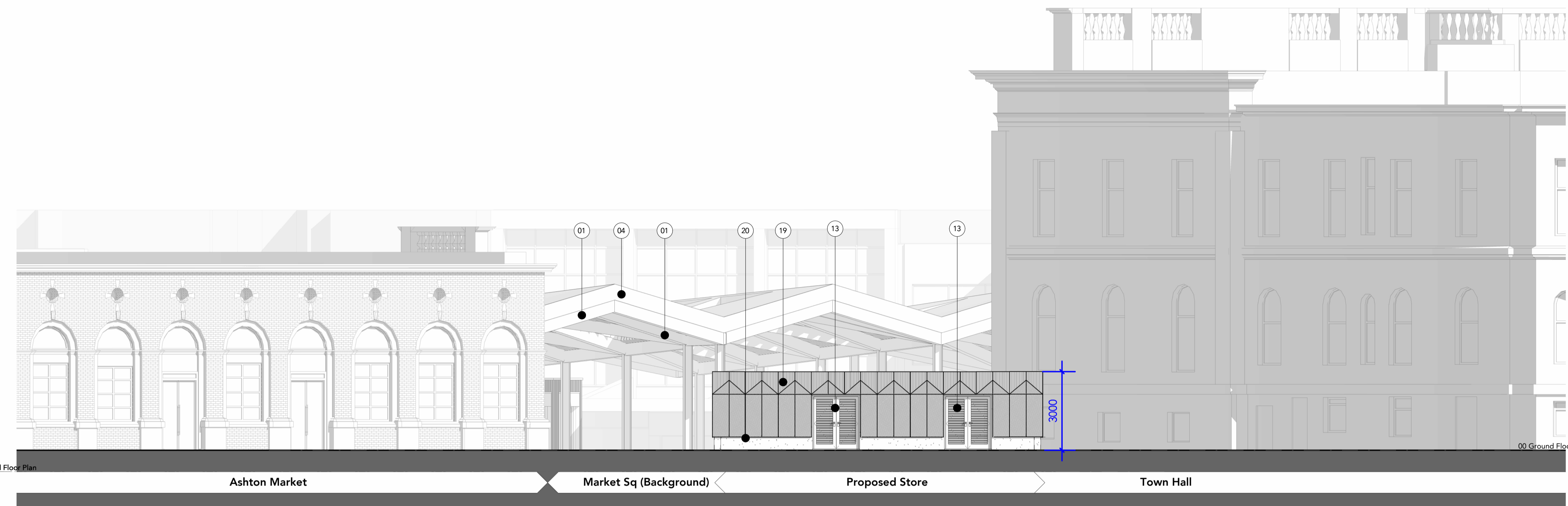
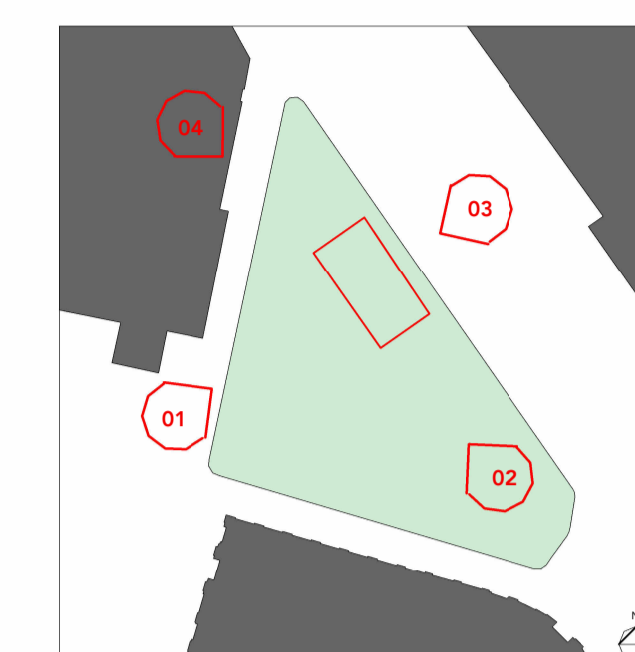
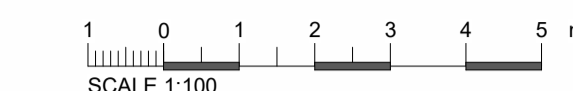




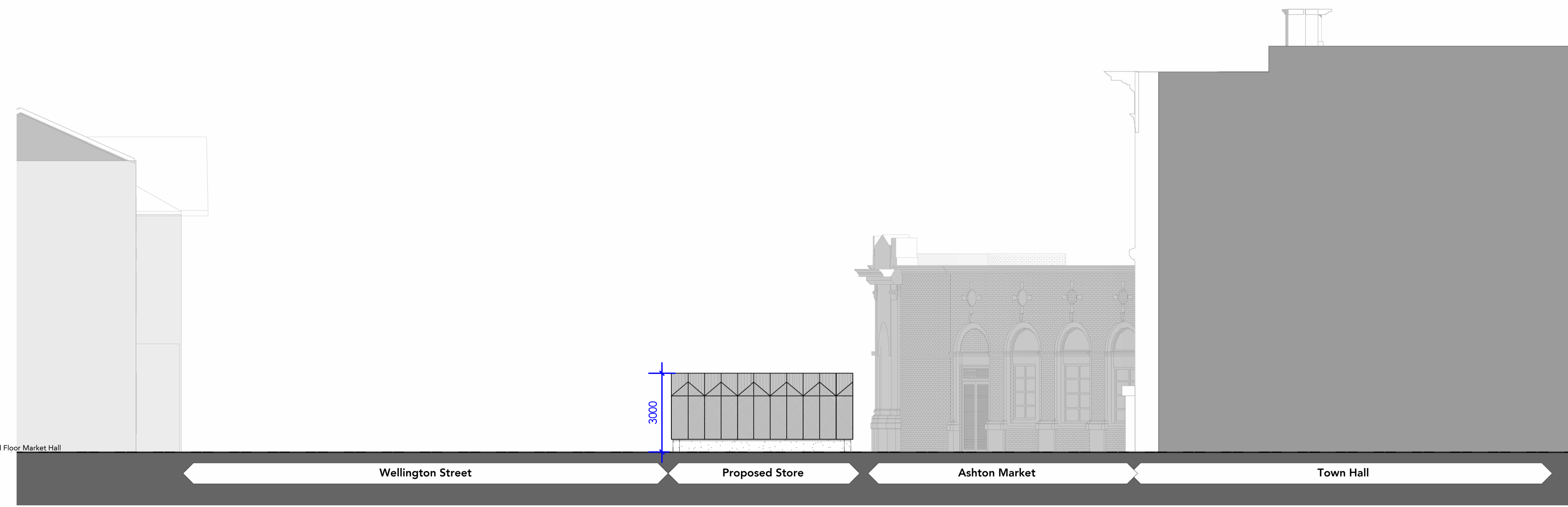
Note:
Do Not Scale from this drawing.
Dimensions are to be checked on site.
If in doubt please ask.



03 Proposed Southwest Elevation
1 : 100

Material Key

Material
01 Structural Steel Frame. Painted Dark Grey - RAL 7016
02 Primary Timber Purlins. Clear coat finish
03 Timber Plywood deck soffit.
04 Aluminium Eaves Flashing. Colour : Light Grey to match roof covering
05 Aluminium Standing Seam Roof. Colour : Painted Light Grey.
06 Aluminium Glazed Rooflight. Colour : PPC Dark Grey - RAL 7016
07 Rainwater down pipes. Black plastic.
08 Vertical Profiled Metal Cassette cladding panel. PPC, Colour : Metallic Light Blue : Senoal 2525 (Exact colour TBC on site sample)
09 Vertical Profiled Metal Cassette cladding panel. PPC, Colour : Metallic Gold : Gondar 2525 (Exact colour TBC on site sample)
10 Vertical Profiled Metal Cassette cladding panel. PPC, Colour : Metallic orange/red : Djibouti Sable (Exact colour TBC on site sample)
11 Aluminium parapet flashing. PPC to match cladding panel
12 Steel glazed doors. Painted Dark Grey. (PPC RAL 7016)
13 Steel louvred doors. Painted Dark Grey. (PPC RAL 7016)
14 Single Ply Membrane Roof. Colour Dark Grey.
15 Feature Timber frame opening reveals. Clear Coat finish.
16 Metal opening hatch/shutter PPC to match cladding panel.
17 Signage Panel. Blackboard with Timber plinth - Colour Black.
18 Aluminium Perforated Cladding Panel. PPC to match cladding panel. Feature Ash Pattern TBC. Colour to match Kiosk.
19 Fibre cement cladding panel. Equitone Linea groove. Colour : Graphite.
20 Concrete upstand plinth. Self coloured visual concrete.



04 Proposed Southeast Elevation
1 : 100

P01 JUNE 2023 PLANNING ISSUE
Rev Date Intis Details
© The moral rights of the author are hereby asserted.
This drawing and design is the sole property of Buttress Ltd and must not be reproduced without permission.
Buttress Ltd is Registered in England and Wales: 5862873

Buttress

41 Bengal Street Manchester M4 6AF
Clochwa, Yorkshire House Greek Street, Leeds LS1 5SH
T 0161 236 3303 0113 539 7965
E contact@buttress.net
W www.buttress.net

Project Title Ashton Market
Client Ashton Borough Council
Location Ashton, Manchester

Drawing ref Proposed Elevations- Store (Sheet 2)

Date 15/06/2023 15:41:58 **Scale** As indicated
Checker KC/PH **Size** A1
Job No: 9529 **Status**

Project	Origin	Volume	Level	Type	Role	Number	Rev
ASHTN-BUT-XX-XX-DR-A-05004-P01							